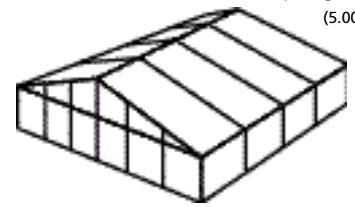


100'

PERMATENT® on 13' legs

30M PERMATENT on 4M legs

frame spacing 16'4"
(5.00m)



American Pavilion's wide selection of premium products includes highly durable and flexible clear-span PERMATENTS® that can be used in a variety of ways to best meet the needs of our customers.

Engineered for maximum strength with the ability to withstand strong winds and inclement weather, these tents are constructed using a rigid, anodized aluminum frame covered with flame-retardant vinyl fabric.

With no center poles or exterior guy lines, PERMATENTS are extremely versatile. Designed in a modular system, the tents can be expanded in 16 feet 4 inch lengths making them ideal choices for large exhibits or events.

Clear Span tents are available in a variety of colors and have a number of customizable features such as specialized sidewalls that can be completely removed.

Interior rafters can be utilized for hanging signs, lights, fans, curtains or decorations. A full complement of flooring, lighting and double glass doors are also available.

Easily installed and removed, the PERMATENT is an excellent choice for all occasions and events.

Technical Data

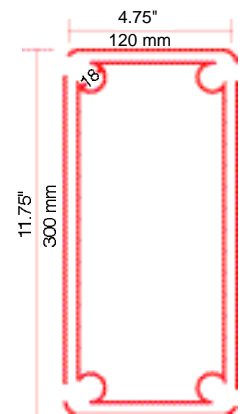
	US ¹	Metric
Roof Slope:	18°	18°
Side/eave height:	12' 8"	3860mm
Peak/ridge height:	28' 9"	8763mm
Distance between trusses:	16' 4"	5000mm
Truss profile:	11.75" x 4.75"	300mm x 120mm
Ridge/rim purlin profile:	5.5" x 4"	140mm x 100mm
Intermediate purlin profile:	3.25" x 3.25"	80mm x 80mm
Wind loads:	Class C 75 mph winds	Class C 120 km/h winds
Hanging loads ² :	1450 lbs	650 kgs

The PERMATENT® is in accordance to the following US building code standards:

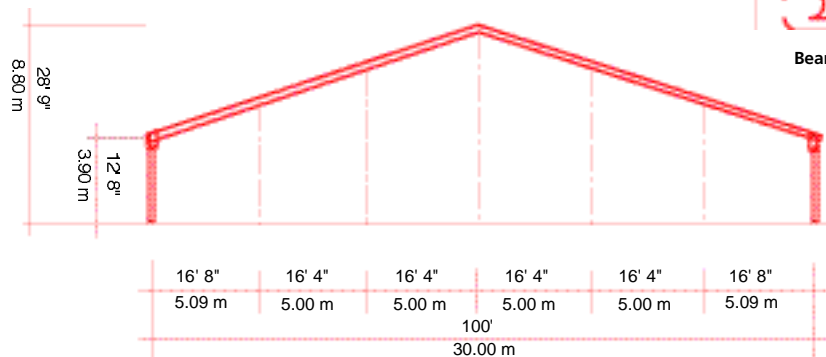
- Uniform Building Code (UBC)
- Building Officials and Code Administrators (BOCA)
- Southern Building Code Congress Int'l: Standard Building Code (SCCI-SBC)
- Southern Florida Building Code (SFBC)

¹ US measurements have been rounded to the nearest 1/4"

² Weight per rafter. Weight has to be equally distributed over the complete width of the rafter. All figures are theoretical calculations, based on a fully enclosed structure.



Beam Cross Section



American Pavilion Company, Inc.
1706 Warrington Avenue
Danville, Illinois 61832

800.424.9699
217.443.0800
217.443.9619 fax

americanpavilion.com