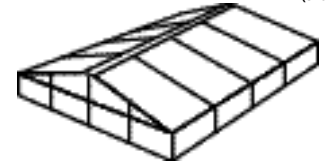


# 66'

## PERMATENT® on 8' legs

20M PERMATENT on 2.4M legs

frame spacing 16'4"  
(5.00m)



American Pavilion's wide selection of premium products includes highly durable and flexible clear-span PERMATENTS® that can be used in a variety of ways to best meet the needs of our customers.

Engineered for maximum strength with the ability to withstand strong winds and inclement weather, these tents are constructed using a rigid, anodized aluminum frame covered with flame-retardant vinyl fabric.

With no center poles or exterior guy lines, PERMATENTS are extremely versatile. Designed in a modular system, the tents can be expanded in 16 feet 4 inch lengths making them ideal choices for large exhibits or events.

Clear Span tents are available in a variety of colors and have a number of customizable features such as varying perimeter heights and specialized sidewalls that can be completely removed.

Interior rafters can be utilized for hanging signs, lights, fans, curtains or decorations. A full complement of flooring, lighting and double glass doors are also available.

Easily installed and removed, the PERMATENT is an excellent choice for all occasions and events.

### Technical Data

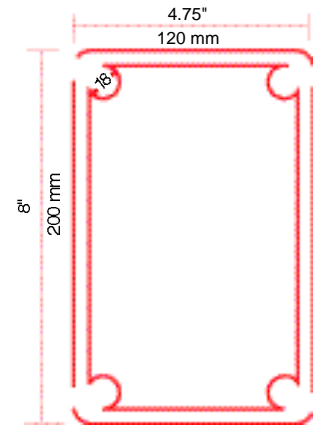
	US <sup>1</sup>	Metric
Roof Slope:	18°	18°
Side/eave height:	7' 10"	2390mm
Peak/ridge height:	18' 9.75"	5730mm
Distance between trusses:	16' 4"	5000mm
Truss profile:	8" x 4.75"	200mm x 120mm
Ridge/rim purlin profile:	4.75" x 3.25"	120mm x 80mm
Intermediate purlin profile:	2.5" x 2.5"	60mm x 60mm
Wind loads:	Class C 70 mph winds	Class C 115 km/h winds
Hanging loads <sup>2</sup> :	1000 lbs	455 kgs

The PERMATENT® is in accordance to the following US building code standards:

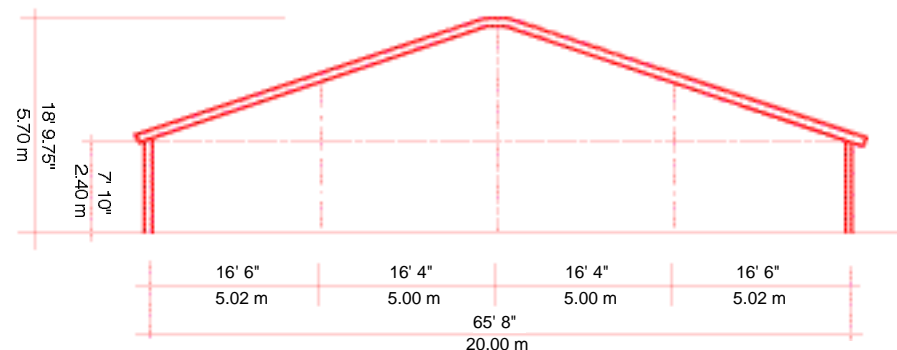
- Uniform Building Code (UBC)
- Building Officials and Code Administrators (BOCA)
- Southern Building Code Congress Int'l: Standard Building Code (SCCI-SBC)
- Southern Florida Building Code (SFBC)

<sup>1</sup> US measurements have been rounded to the nearest 1/4"

- <sup>2</sup> Weight must be distributed evenly as follows:
- Left Rafter Centerpiece: 250 lbs (114kgs)
  - Ridge: 500 lbs (227 kgs)
  - Right Rafter Centerspan: 250 lbs (114 kgs)



Beam Cross Section



American Pavilion Company, Inc.  
1706 Warrington Avenue  
Danville, Illinois 61832

800.424.9699  
217.443.0800  
217.443.9619 fax

americanpavilion.com